

School-Based Health Care in New Mexico



128

SBHCs in New Mexico

112

funded by NMDOH
OSAH

School-based health centers provide quality, integrated, youth-friendly and culturally responsive health care services to keep children and adolescents healthy, in school and ready to learn.

Where are SBHCs located?

- 56 high schools
- 13 middle schools
- 27 elementary schools
- 30 combined grade campuses
- 2 early childhood sites

What services do SBHCs provide?



Primary Care



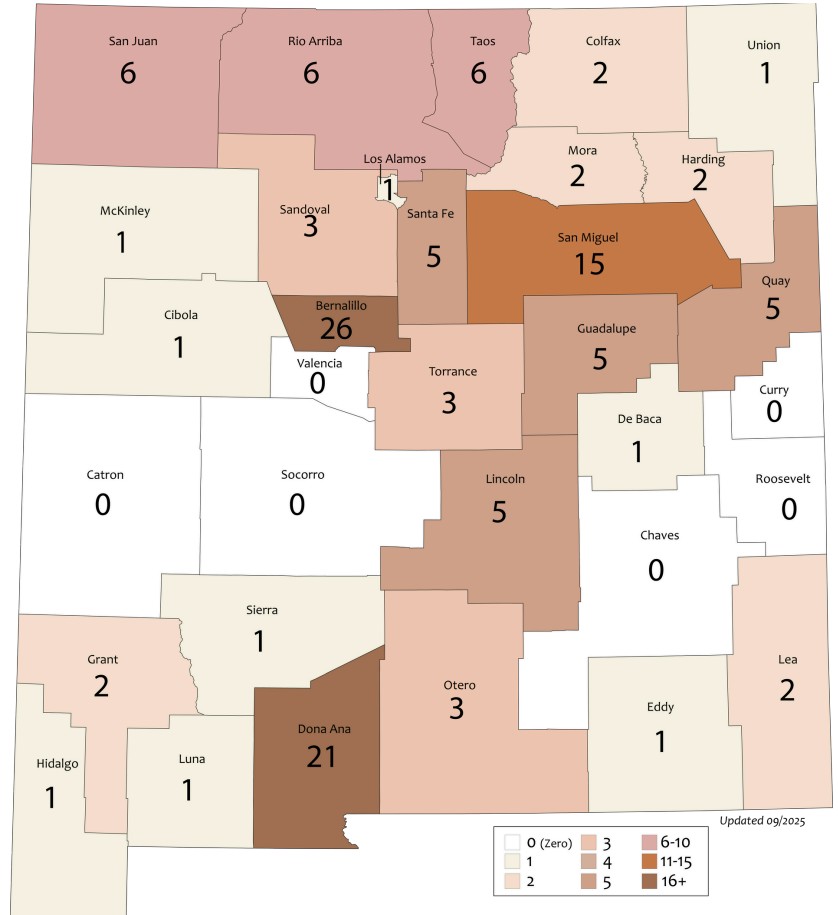
Behavioral Health



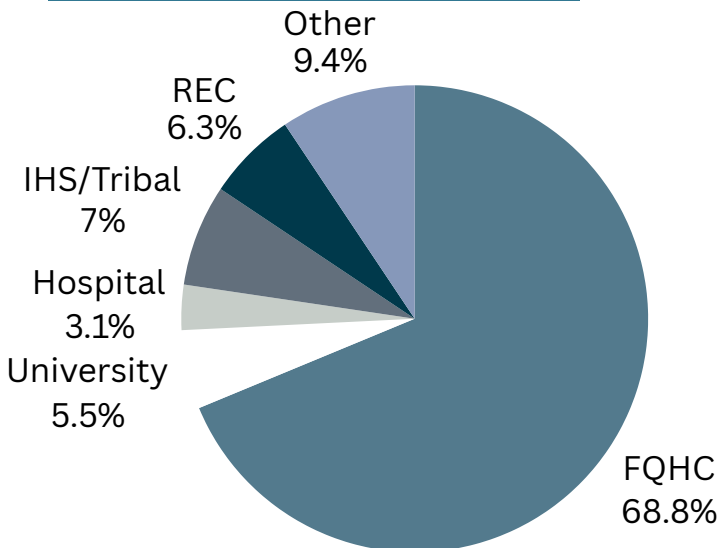
Oral Health



“ We provide care to students and families who would not have primary or behavioral healthcare otherwise. We fill a large need. ”



Who operates SBHCs?



Over 90% of SBHCs are located in Health Provider Shortage Areas (HPSAs) for primary care, behavioral health and/or both.

Over half of SBHCs are located on a community school campus

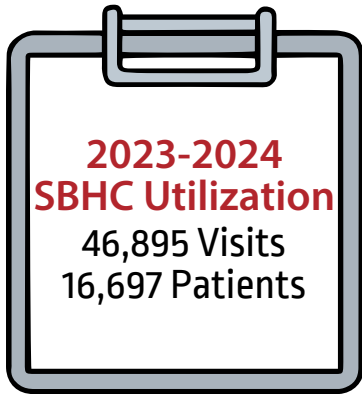


Over 75% of SBHCs are located at Title I schools

Updated: September 2025

NMDOH Funded SBHC Data

2023-24 Report



**2023-2024
SBHC Utilization**
46,895 Visits
16,697 Patients



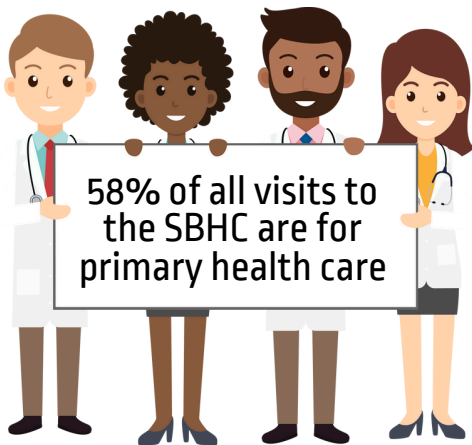
SBHCs Provide:

- Acute Care for Minor Illnesses & Injuries
- Behavioral & Mental Health Care
- Comprehensive Wellness Exams (EPSDT)
- Immunizations
- Reproductive Health Care
- Telehealth
- Referrals to Other Services

Top 5 Reasons to Visit a SBHC

- 1 General Health
- 2 Illness or Injury
- 3 Adjustment Disorder
- 4 Anxiety related Disorders
- 5 Depression

“ We are a rural community and most families lack resources. Our SBHC allows easy access to healthcare for families. ”
-SBHC Coordinator



58% of all visits to the SBHC are for primary health care

“ We are the safety net in our Community. ”
-SBHC Provider

81% of students who visited the SBHC reported missing zero or one class during the day.



34% of SBHC visits are categorized as behavioral health



12% of SBHC patients screened in 2023-24 reported suicidal ideation

On average, SBHCs across the state provide 21 hours of primary care, and 25 hours of behavioral health care each week

“ A patient with depressed mood, low self-esteem, history of self-harm, history of suicidal thoughts, and a previous suicide attempt said he had never received mental health care. Five months after beginning therapy, and medication, he reports that he hasn't had urges for self harm or suicidal ideation and has new friendships. ”
- SBHC Staff

NM School Based Health Centers

SBHCs - NMDOH OSAH & Non-NMDOH OSAH Sites

NMDOH OSAH Funded Sites - 112

1. Abiquiu ES
2. ACE Leadership HS
3. Alameda ES
4. Albuquerque HS
5. Anton Chico ES/MS
6. Arrowhead Park Early College HS
7. Bernalillo HS
8. Booker T. Washington ES
9. Capital HS
10. Capitan Schools
11. Carlos F Vigil MS
12. Carlsbad HS
13. Carrizozo Schools
14. Centennial HS
15. Chaparral HS
16. Cloudcroft Schools
17. Cobre HS
18. Conlee ES
19. Corona Schools
20. Cottonwood Classical
21. Cuba Independent Schools
22. Des Moines Schools
23. Desert Pride Academy HS
24. Don Cecelio ES
25. Doña Ana ES
26. East San Jose ES
27. El Rito ES
28. Emerson ES
29. Enos Garcia ES
30. Escalante MS/HS (aka Chama Valley)
31. Espanola Valley HS
32. Fort Sumner Municipal Schools
33. Gadsden HS
34. Gordon Bernell HS
35. Grant MS
36. Health Leadership HS
37. Highland HS
38. Hondo Valley Schools
39. House Schools
40. Jemez Mountain SD (Lybrook ES, Gallina ES, Coronado MS/HS)
41. La Union ES
42. Las Cruces HS
43. Lordsburg HS
44. Los Puentes HS
45. Luis Armijo ES
46. Lynn MS
47. Mac Arthur ES
48. Manzano HS
49. Mark Armijo HS
50. Mayfield HS
51. McCurdy Charter ES/HS
52. Mesa Vista Schools
53. Mesilla Park ES
54. Mike Mateo Sena ES
55. Mora Independent Schools
56. Moriarty-Gewood Schools
1. Mountainair ES
2. Mountainair MS/HS
3. NACA HS @ CNM/College & Career HS
4. Native American Charter Academy ES/MS
5. Navajo Preparatory HS
6. New Futures HS
7. North Valley ES
8. Organ Mountain HS
9. Pecos ES
10. Pecos HS
11. Pecos MS
12. Penasco Independent Schools
13. Picacho MS
14. Pojoaque HS
15. Pojoaque MS
16. Ranchos de Taos ES
17. Raton HS
18. Rio Gallinas Charter HS
19. Rio Grande Preparatory HS
20. Robert F. Kennedy Charter HS
21. Robertson HS
22. Roy ES
23. Roy HS
24. Ruidoso HS
25. San Jon Schools
26. Santa Fe HS
27. Santa Rosa ES
28. Santa Rosa HS
29. Santa Rosa MS
30. Santa Teresa HS
31. Siembra Leadership HS
32. Sierra Vista ES
33. Silver HS
34. Solare Collegiate HS
35. South Valley Academy HS
36. Springer HS
37. Taos HS
38. Taos MS
39. Technology Leadership HS
40. Tony Serna Jr ES
41. Tucumcari ES
42. Tucumcari HS
43. Tucumcari MS
44. Tularosa Schools
45. Union Street ES
46. Van Buren MS
47. Vaughn ES/HS
48. Wagon Mound ES/HS
49. Washington MS
50. West Las Vegas HS/MS
51. West Mesa HS
52. Wilson MS
53. WLV Early Childhood - Tony Serna
54. WLV Early Childhood Center (9th St)
55. WLV Valley ES/MS
56. Yucca Heights ES

Non-NMDOH OSAH Sites - 16

1. Atrisco Heritage Academy HS
2. Career Prep HS
3. Deming HS
4. Hatch Valley HS
5. Hobbs HS
6. Laguna Acoma Jr/Sr High
7. Los Alamos HS
8. Lovington HS
9. Newcomb MS/HS
10. Rio Grande HS
11. San Felipe ES (K-8)
12. Shiprock HS
13. Shiprock Northwest HS
14. Truth or Consequences Schools
15. Tse Bit Ai MS
16. Zuni Public Schools

OSAH Sites

56 - New
10 - New/Prev
46 - Current
6 - Closed

Hub & Spoke

16 Hubs
52 Spokes

Counties - No SBHCs

Catron
Chaves
Curry
Roosevelt
Socorro
Valencia

Updated: September 2025

NM School Based Health Centers

SBHCs - Non-NMDOH OSAH Sites

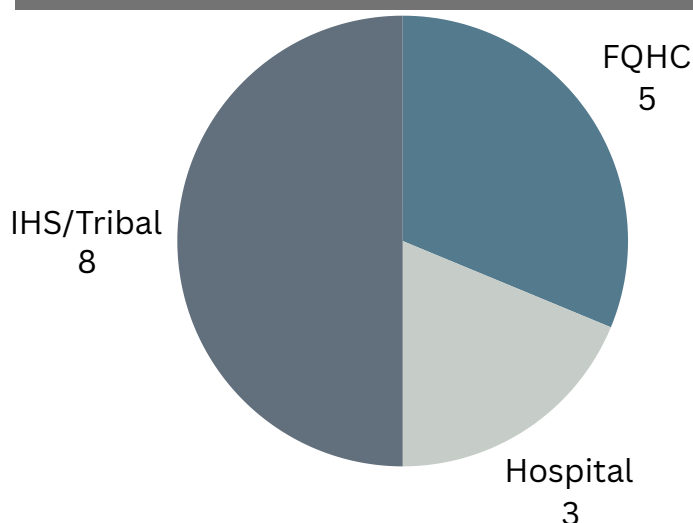
Non-NMDOH OSAH Sites - 16

1. Atrisco Heritage Academy HS
2. Career Prep HS
3. Deming HS
4. Hatch Valley HS
5. Hobbs HS
6. Laguna Acoma Jr/Sr High
7. Los Alamos HS
8. Lovington HS
9. Newcomb MS/HS
10. Rio Grande HS
11. San Felipe ES (K-8)
12. Shiprock HS
13. Shiprock Northwest HS
14. Truth or Consequences Schools
15. Tse Bit Ai MS
16. Zuni Public Schools

Non - OSAH Sites

- 10 High Schools
- 1 Middle School
- 1 Elementary School
- 4 Combined Grade Campuses
- 0 Early Childhood Sites

Who operates SBHCs that are not OSAH funded?



Non-NMDOH OSAH by Sponsor

Ben Archer

1. Deming HS - Deming
2. Hatch Valley HS - Hatch
3. Truth or Consequences Schools - T or C

First Choice

1. Rio Grande HS - Albuquerque

Indian Health Services (IHS) - Northern Navajo Medical Center - Shiprock IHS

1. Career Prep HS - Shiprock
 2. Newcomb MS/HS - Newcomb
 3. Shiprock HS - Shiprock
 4. Tse Bit Ai MS - Shiprock
 5. Shiprock Northwest HS - Shiprock
- Provides medical for Navajo Prep - OSAH funded*

Laguna Healthcare Corporation

1. Laguna-Acoma Jr/Sr HS - Casa Blanca

Las Clinicas del Norte

1. Los Alamos HS - Los Alamos
- LCDN has 7 sites that are OSAH funded*

Nor-Lea Hospital

1. Hobbs HS - Hobbs
2. Lovington HS - Lovington

Pueblo of San Felipe - Health & Wellness Dept

1. San Felipe ES - San Felipe Pueblo

UNM Hospital

1. Atrisco Heritage Academy HS - Albuquerque

Zuni Pueblo

1. Zuni Public Schools - Zuni

NM School Based Health Centers - 2025-26

SBHCs by County, School, Medical Sponsor and City

Bernalillo County - All Albuquerque:

1. ACE Leadership HS* - Owens Admin
2. Albuquerque HS* - UNM Medical Group (UNMMG)
3. Atrisco Heritage Academy - UNM Hospital
4. Cottonwood Classical* - Owens Admin
5. East San Jose ES* - UNMMG
6. Emerson ES* - First Nations
7. Gordon Bernell HS* - Owens Admin
8. Grant MS* - First Nations
9. Health Leadership HS* - Owens Admin
10. Highland HS* - UNMMG
11. Los Puentes HS* - Owens Admin
12. Manzano HS* - UNMMG
13. Mark Armijo HS* - Owens Admin
14. NACA Charter* - First Nations
15. NACA HS at CNM/College & Career HS* - First Nations
16. New Futures HS* - First Nations
17. Rio Grande HS - First Choice
18. RFK Charter* - Owens Admin
19. Siembra Leadership HS* - Owens Admin
20. Solare Collegiate* - Owens Admin
21. South Valley Academy Charter* - Owens Admin
22. Technology Leadership HS* - Owens Admin
23. Van Buren MS* - UNMMG
24. Washington MS* - UNMMG
25. West Mesa HS* - UNMMG
26. Wilson MS* - First Nations

Cibola County - Casa Blanca

1. Laguna Acoma JR/SR HS - Laguna Healthcare Corp

Colfax County

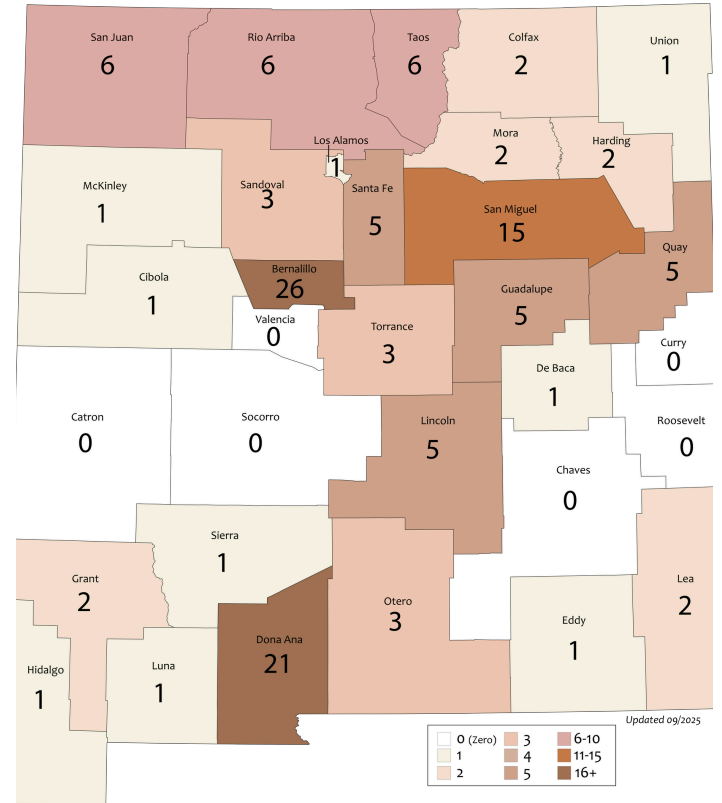
1. Raton HS* - La Familia Primary Care - Raton
2. Springer HS* - El Centro - Springer

Doña Ana County

1. Alameda ES* - La Clinica de Familia (LCDF) - Las Cruces
2. Arrowhead Park ECA HS* - LCDF - Las Cruces
3. Booker T. Washington ES* - LCDF - Las Cruces
4. Centennial HS* - LCDF - Las Cruces
5. Chaparral HS* - LCDF - Chaparral
6. Conlee ES* - LCDF - Las Cruces
7. Desert Pride Academy* - LCDF - Anthony
8. Dona Ana ES* - LCDF - Las Cruces
9. Gadsden HS* - LCDF - Anthony
10. Hatch Valley HS - Ben Archer - Hatch
11. La Union ES* - LCDF - Anthony
12. Las Cruces HS* - LCDF - Las Cruces
13. Lynn MS* - LCDF - Las Cruces
14. Mac Arthur ES* - LCDF - Las Cruces
15. Mayfield HS* - LCDF - Las Cruces
16. Mesilla Park ES* - LCDF - Las Cruces
17. North Valley ES* - LCDF - La Mesa
18. Organ Mountain HS* - LCDF - Las Cruces
19. Picacho MS* - LCDF - Las Cruces
20. Rio Grande Prep* - LCDF - Las Cruces
21. Santa Teresa HS* - LCDF - Santa Teresa

De Baca County - Ft Sumner

1. Ft Sumner Schools* - De Baca Family Practice



Eddy County - Carlsbad

1. Carlsbad HS* - Presbyterian Medical Services

Grant County

1. Cobre HS* - Hidalgo Medical Services - Bayard
2. Silver HS* - Hidalgo Medical Services - Silver City

Guadalupe County

1. Anton Chico ES/MS* - Sunrise Clinics - Anton Chico
2. Santa Rosa ES* - Sunrise Clinics - Santa Rosa
3. Santa Rosa HS* - Sunrise Clinics - Santa Rosa
4. Santa Rosa MS* - Sunrise Clinics - Santa Rosa
5. Vaughn ES/HS* - Sunrise Clinics - Vaughn

Harding County - Roy

1. Roy ES* - El Centro Family Health
2. Roy HS* - El Centro Family Health

Hidalgo County - Lordsburg

1. Lordsburg HS* - Hidalgo Medical Services

Lea County

1. Hobbs HS - Nor-Lea Hospitals - Hobbs
2. Lovington HS - Nor-Lea Hospitals - Lovington

Lincoln County

1. Capitan Schools* - REC IX - Capitan
2. Carrizozo Schools* - REC IX - Carrizozo
3. Corona Schools* - REC IX - Corona
4. Hondo Valley Schools* - REC IX - Hondo
5. Ruidoso HS* - REC IX - Ruidoso

Los Alamos County - Los Alamos

1. Los Alamos HS - Las Clinicas del Norte (LCDN)

* NMDOH Funded sites

Updated: September 2025

Luna County - Deming
 1. Deming HS - Ben Archer

McKinley County
 1. Zuni Schools - Zuni Pueblo - Zuni

Mora County
 1. Mora Schools* - Mora Valley Community Health - Mora
 2. Wagon Mound ES/HS* - Sunrise Clinics - Wagon Mound

Otero County
 1. Cloudcroft Schools* - REC IX - Cloudcroft
 2. Tularosa Schools* - REC IX - Tularosa
 3. Yucca Heights ES* - LCDF - Chaparral

Quay County
 1. House Schools* - De Baca - House
 2. San Jon Schools* - REC VI - San Jon
 3. Tucumcari ES* - Sunrise Clinics - Tucumcari
 4. Tucumcari HS* - Sunrise Clinics - Tucumcari
 5. Tucumcari MS* - Sunrise Clinics - Tucumcari

Rio Arriba County
 1. Abiquiu ES* - Las Clinicas del Norte - Abiquiu
 2. Carlos F Vigil MS* - El Centro - Espanola
 3. El Rito ES* - Las Clinicas del Norte - El Rito
 4. Escalante MS/HS - La Clinica del Pueblo - Tierra Amarilla
 5. Espanola Valley HS* - El Centro - Espanola
 6. Jemez Mountain Schools* - Las Clinicas del Norte - Gallina

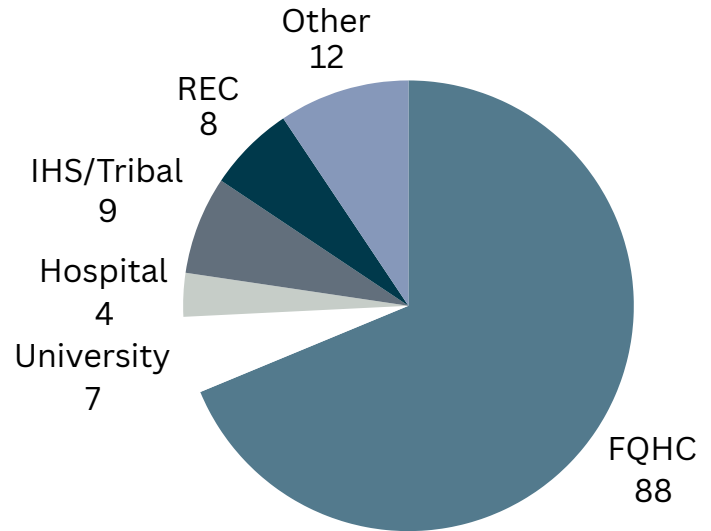
Sandoval County
 1. Bernalillo HS* - El Pueblo Health - Bernalillo
 2. Cuba Schools* - Presbyterian Medical Services - Cuba
 3. San Felipe ES - Pueblo of San Felipe - San Felipe

San Juan County
 1. Career Prep HS - IHS - Shiprock
 2. Navajo Prep - Indian Health Services (IHS) - Farmington
 3. Newcomb Schools - IHS - Newcomb
 4. Shiprock HS - IHS - Shiprock
 5. Shiprock Northwest HS - IHS - Shiprock
 6. Tse Bit Ai MS - IHS - Shiprock

San Miguel County
 1. Don Cecelio ES* - Sunrise Clinica - Las Vegas
 2. Luis Armijo ES* - Sunrise Clinics - Las Vegas
 3. Mike Mateo Sena ES* - El Centro Family Health - Sapello
 4. Pecos ES* - Sunrise Clinics - Pecos
 5. Pecos HS* - Sunrise Clinics - Pecos
 6. Pecos MS* - Sunrise Clinics - Pecos
 7. Rio Gallinas Charter HS* - Sunrise Clinics - Las Vegas
 8. Robertson HS* - El Centro Family Health - Las Vegas
 9. Sierra Vista ES* - El Centro Family Health - Las Vegas
 10. Tony Serna Jr ES* - Sunrise Clinics - Las Vegas
 11. Union Street ES* - Sunrise Clinics - Las Vegas
 12. West Las Vegas HS/MS* - Sunrise Clinics - Las Vegas
 13. WLV Early Childhood - Tony Serna ES* - Sunrise Clinics
 14. WLV Early Childhood Center (9th St)* - Sunrise Clinics
 15. WLV Valley ES/MS* - Sunrise Clinics - Ribera

Santa Fe County
 1. Capital HS* - Presbyterian Medical Services - Santa Fe
 2. McCurdy Charter ES/HS* - Las Clinicas del Norte - Espanola
 3. Pojoaque HS* - Las Clinicas del Norte - Pojoaque
 4. Pojoaque MS* - Las Clinicas del Norte - Pojoaque
 5. Santa Fe HS* - Presbyterian Medical Services - Santa Fe

Who operates SBHCs?



Where are SBHCs located?

- 56 High Schools
- 13 Middle Schools
- 27 Elementary Schools
- 30 Combined Grade Campuses
- 2 Early Childhood Sites

Sierra County - Truth or Consequences
 1. Truth or Consequences Schools - Ben Archer

Taos County
 1. Enos Garcia ES* - El Centro Family Health - Taos
 2. Mesa Vista Schools* - Las Clinicas del Norte - Ojo Caliente
 3. Peñasco Schools* - El Centro Family Health - Peñasco
 4. Ranchos de Taos ES* - El Centro Family Health - Taos
 5. Taos HS* - El Centro Family Health - Taos
 6. Taos MS* - El Centro Family Health - Taos

Torrance County
 1. Moriarty-Edgewood Schools* - Presbyterian Medical Services - Moriarty
 2. Mountainair ES* - Sunrise Clinics - Mountainair
 3. Mountainair MS/HS* - Sunrise Clinics - Mountainair

Union County - Des Moines
 1. Des Moines Schools* - Union County Hospital

Recently Closed
 1. Mesa MS - La Casa - Roswell - Chaves
 2. Gallup McKinley HS* - PMS - Gallup, NM - McKinley
 3. Goddard HS* - La Casa - Roswell - Chaves
 4. Marshall MS - La Casa - Clovis - Curry
 5. Quemado Schools* - PMS - Quemado - Catron
 6. Roswell HS* - La Casa - Roswell - Chaves
 7. Sierra MS* - La Casa - Roswell - Chaves
 8. Socorro HS* - PMS - Socorro - Socorro

* NMDOH Funded sites

Updated: September 2025

