

NEW MEXICO'S SCHOOL-BASED HEALTH CENTERS

School-based health centers (SBHCs) provide quality, integrated, youth-friendly, & culturally responsive health care services to keep children & adolescents healthy, in school, & ready to learn.

2016-2017



SBHCs across New Mexico



51

SBHCs funded by OSAH or share data



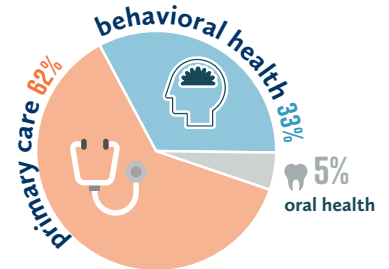
17,451

Clients received care

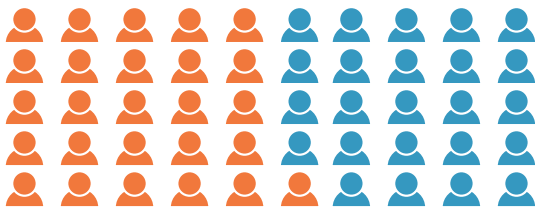


51,516

Visits to SBHCs



INCREASED ACCESS



48% of students who utilized health care services from an SBHC stated the SBHC was their **only place to receive care.**¹

98% of SBHCs are located in **health care provider shortage areas.**

New Mexico students going to their SBHC for care *spend more time in classes.*

 **1.5** vs. **3.5**

Students who go to their SBHC miss **only 1.5 classes** on average compared to 3.5 classes going to any other place.¹

HEALTHY & READY TO LEARN

Substantial educational benefits associated with SBHCs include:

- *reductions in rates of school suspension or high school non-completion,*
- *increases in grade point averages, &*
- *increased grade promotion.*²

MONEY & TIME WELL-INVESTED

For every one dollar invested in New Mexico SBHCs, there is a **\$7.01 Return on Investment.**



Lifetime **net savings of \$3,190,591** due to receiving behavioral health services.³

Office of School and Adolescent Health (OSAH) supports all SBHCs in New Mexico. Supports can include:

1. operational funding
2. technical assistance
3. advocacy
4. data support and reporting
5. professional development

HEALTHCARE FOR KIDS **WHERE** THEY ARE AND **WHEN** THEY NEED IT.

NEW MEXICO'S SCHOOL-BASED HEALTH CENTERS 2016-2017

MAP LEGEND



Counties with School-Based Health Centers

TEXT LEGEND



SBHCs receiving operational funding from OSAH



School-Based Health Centers not funded or sharing data with OSAH.



Indicates SBHCs sharing data with OSAH but not funded by OSAH

SAN JUAN COUNTY

Navajo Preparatory School
Northwest High School
Newcomb Mid./High School
Shiprock High School
Tse Bit Ai Middle School

SANDOVAL COUNTY

Bernalillo High School
Cuba Schools
San Felipe Pueblo Elementary School*

BERNALILLO COUNTY

Albuquerque High School
Atrisco Heritage High School
East San Jose Elementary School
Emerson Elementary School
Grant Middle School
Highland High School
Manzano High School
Native American Charter Academy
RFK Charter High School
Rio Grande High School
School on Wheels
South Valley Academy
Van Buren Middle School
Washington Middle School
Wilson Middle School

MCKINLEY COUNTY

Crownpoint High School
Gallup High School
Thoreau High School
Tse'Yi'Gai High School

CATRON COUNTY

Quemado Schools (K-12)

SOCORRO COUNTY

Socorro High School

GRANT COUNTY

Cobre High School
Silver High School

HIDALGO COUNTY

Lordsburg School District (K-12)

LUNA COUNTY

Deming High School

RIO ARRIBA COUNTY

Carlos Vigil Middle School
Escalante High School
Española Valley High School

SANTA FE COUNTY

Capital High School
Pojoaque High School
Santa Fe High School

TAOS COUNTY

Mesa Vista Middle School
Peñasco School District (K-12)
Taos Middle School
Taos High School

COLFAX COUNTY

Raton High School

UNION COUNTY

Des Moines High School

HARDING COUNTY

Roy High School

MORA COUNTY

Mora School District (K-12)

SAN MIGUEL COUNTY

Memorial Middle School
Robertson High School
West Las Vegas High School

QUAY COUNTY

San Jon School District (K-12)

CURRY COUNTY

Marshall Middle School

GUADALUPE COUNTY

Santa Rosa High School

DE BACA COUNTY

Ft. Sumner School (K-12)

CHAVES COUNTY

Goddard High School
Lake Arthur (K-12)
Mesa Middle School
Roswell High School

LINCOLN COUNTY

Ruidoso High School

LEA COUNTY

Lovington High School*

OTERO COUNTY

Mescalero Apache School

SIERRA COUNTY

Ben Archer SBHC

EDDY COUNTY

Carlsbad High School

DOÑA ANA COUNTY

Arrowhead Park High School
Centennial High School
Chaparral High School
Gadsden High School
Hatch Valley High School
Las Cruces High School
Mayfield High School
Oñate High School
Rio Grande Prep
Santa Teresa High School



OFFICE OF SCHOOL & ADOLESCENT HEALTH

300 San Mateo Blvd, Suite 902 Albuquerque, NM 87109
505-841-5889 | nmschoolhealth.org

¹2016-2017 New Mexico School-Based Health Center Student Survey

²Knopf JA, Finnie RKC, Peng Y, Hahn RA, Truman BI, Vernon-Smiley M, Johnson VC, Johnson RL, Fielding JE, Muntaner C, Hunt PC, Jones CP, Fullilove MT, Community Preventive Services Task Force. School-based health centers to advance health equity: a Community Guide systematic review. *American Journal of Preventive Medicine* 2016;51(1):114-26.

³New Mexico Alliance for School-Based Health Care PHASE II Expected Value-Return on Investment (EV-ROI) Analysis. Produced by Melanie Ginn and Associates, A Division of MSA Management, LLC on behalf of the New Mexico Alliance for School Based Healthcare (NMASBHC), 2015.